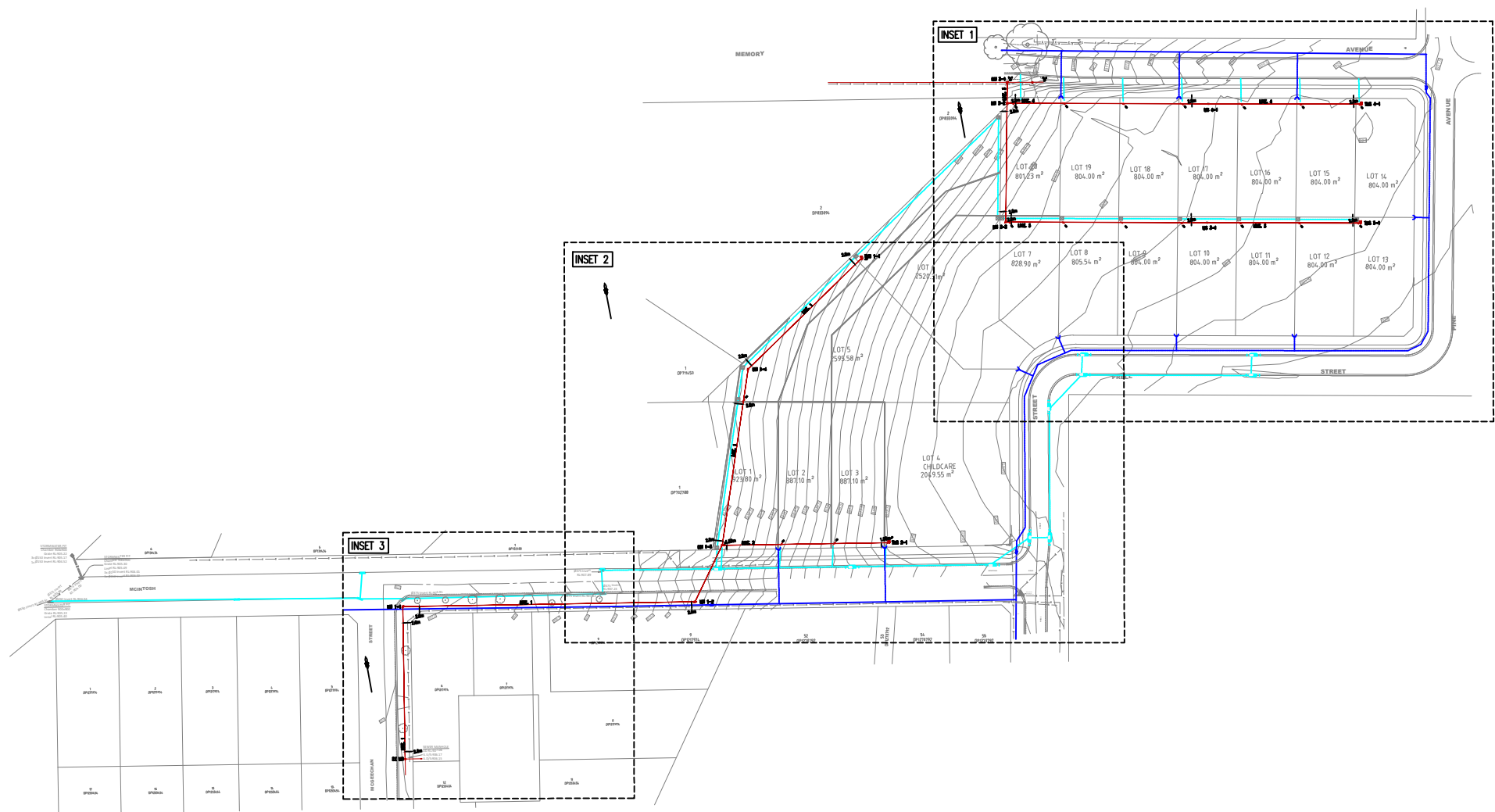


3 MEMORY AVENUE, CROOKWELL – 20 LOT SUBDIVISION SEWER RETICULATION





NOTE:

1. WATER SERVICING COORDINATOR: ACOR CONSULTANTS
SUITE 2, LEVEL1, 33 HERBERT ST
ST LEONARDS NSW 2065
T +61 2 9438 5098 | F +61 9438 5398

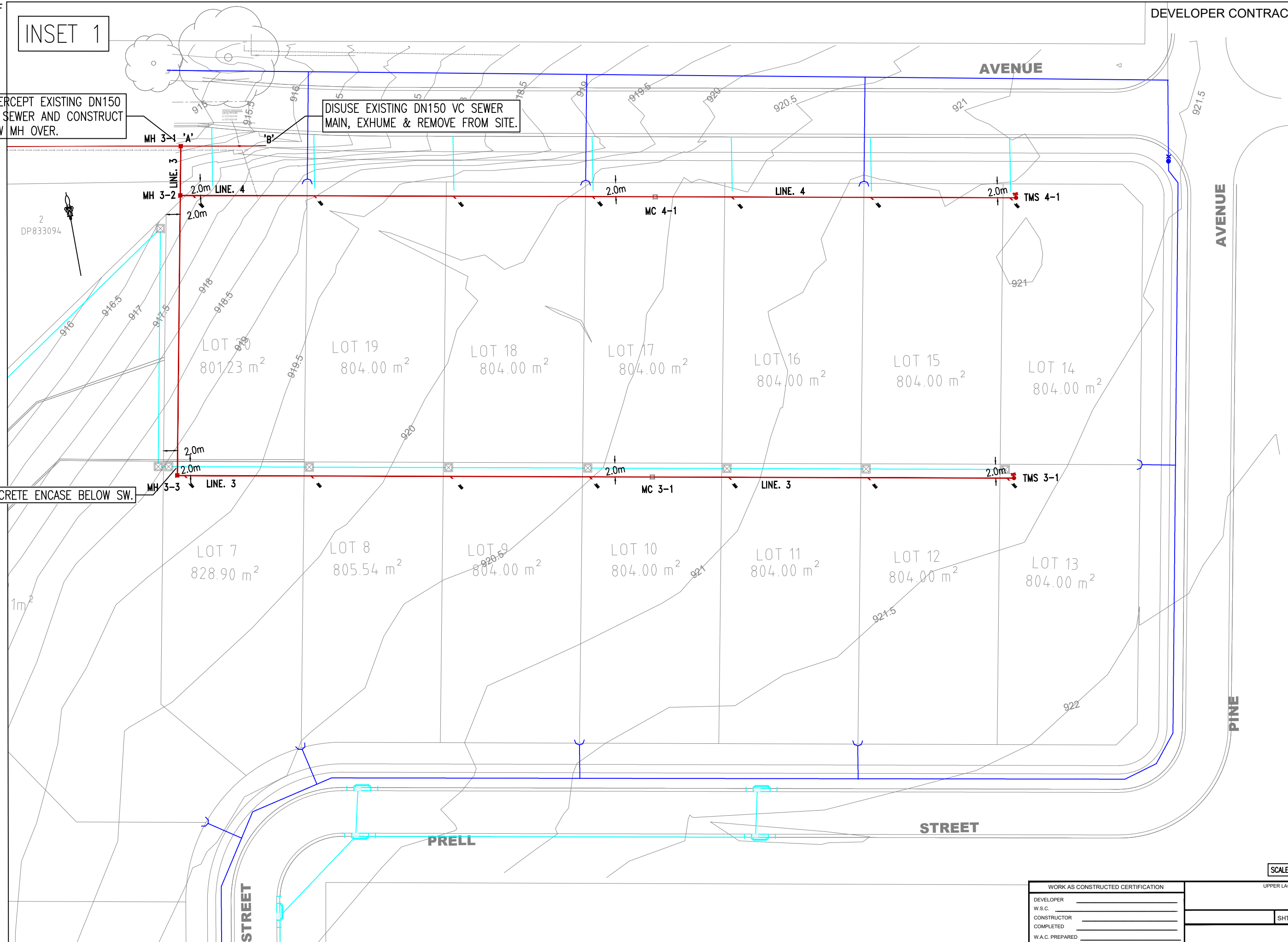
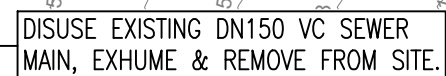
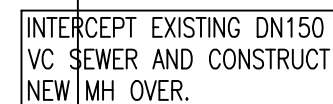
FOR:
BLUESOX DEVELOPMENTS PTY LTD
2. THE PROPOSED WORKS DETAILED HEREON ARE TO BE CONSTRUCTED IN ACCORDANCE WITH WSA 02-2014, V 3.2 & UPPER LACHLAN SHIRE COUNCIL REQUIREMENT.
THE CONTRACTOR MUST HAVE A COPY OF THESE ON SITE AT ALL TIMES.
3. ALL STRUCTURES TO BE CONSTRUCTED TO PROPOSED FINISHED SURFACE LEVELS. ALL LEVELS REFER TO PROPOSED FINISHED SURFACE LEVEL. SEWER CONSTRUCTOR TO LIAISE WITH HEAD CONTRACTOR TO VERIFY ALL DESIGN LEVELS. ACOR CONSULTANTS TO BE NOTIFIED IN WRITING SHOULD THERE BE LEVEL DISCREPANCIES FROM THAT WHICH IS SHOWN ON THIS PLAN. ACOR TO REVIEW FINDINGS AND A VARIATION MAY BE REQUIRED.
5. ALL LEVELS ELECTRONICALLY GENERATED. NO LEVEL BOOK AVAILABLE.

ACOR CONSULTANTS
SUITE 2, LEVEL1, 33 HERBERT ST
ST LEONARDS NSW 2065
T +61 2 9438 5098 | F +61 9438 5398

- | | | | |
|-----|-------------------------------------------------------------------------------------------------------------------------------------------------------------------------------------------------------------------------------------------------------------------------------------------------------------------------------------------------|-----|--------------------------------------------------------------------------------------------------------------------------------------------------------------------------------------------------------------------------------------------------------------------------------------------------------------------------------------------------------------------------------------------------------------------------------------------------------------------------------------------------------------------------------------------------|
| 4. | THE MINIMUM NUMBER OF FIELD COMPACTION TESTS REQUIRED TO SATISFY THE SEWERAGE CODE OF AUSTRALIA ARE TO BE AS PER CL.22: | 12. | IT IS THE CONSTRUCTORS RESPONSIBILITY TO PROVIDE THE CHANNAGES FOR THE PCP's, ANY PCS's AND THE LENGTH OF THE PCS's TO THE ACR CONSULTANTS FOR WORK AS CONSTRUCTED PURPOSES. |
| 7. | SERVICES SHOWN ARE INDICATIVE ONLY. CURRENT SERVICES SEARCH AND SITE CHECK TO CONFIRM HORIZONTAL & VERTICAL POSITIONS OF ALL EXISTING SERVICES WILL BE NECESSARY PRIOR TO COMMENCEMENT OF WORK & APPROPRIATE PROCEDURES, PRECAUTIONS & CARE TO BE TAKEN WHEN WORKING WITHIN CLOSE PROXIMITY TO THESE SERVICES. | 13. | CUSTOMER DRAIN CONNECTIONS CONSTRUCTED CONCURRENTLY WITH THE PROPOSED SEWER MUST BE CONSTRUCTED BY A LICENSED PLUMBER. THE WORKS MUST BE INSTALLED IN ACCORDANCE WITH THE CURRENT NSW CODE OF PRACTICE FOR PLUMBING AND DRAINAGE AND AS/NZS3500. THE CUSTOMER DRAIN RISER MUST NOT EXTEND TO THE SURFACE. A MINIMUM OF 500mm COVER MUST BE MAINTAINED TO PROTECT THE RISER & JUNCTION FROM DAMAGE. THE CUSTOMER DRAIN CONNECTION MUST BE INSPECTED BY A NSW FAIR TRADING PLUMBING INSPECTION ASSURANCE SERVICE (PIAS) OFFICER PRIOR TO BACKFILL. |
| 8. | ELEC/GAS/TELCO AUTHORITY MAY REQUIRE THEIR PERSONNEL TO BE ONSITE WHILST EXCAVATING WITHIN THE VICINITY OF THEIR ASSETS. IT IS THE CONSTRUCTOR'S RESPONSIBILITY TO LIAISE WITH THE AFFECTED AUTHORITIES AS REQUIRED AND OBTAIN APPROVAL AS REQUIRED. | 14. | PIPES TO BE CONCRETE ENCASED SHOWN ACCORDINGLY:-  REFER TO SEW-1205-V |
| 9. | MINIMUM HORIZONTAL AND VERTICAL CLEARANCES BETWEEN THE PROPOSED SEWER MAIN AND OTHER UNDERGROUND SERVICES ARE TO COMPLY WITH TABLE 4.2 (PAGE 75 & 76) OF SEWERAGE CODE OF AUSTRALIA (SYDNEY WATER EDITION - VERSION 4 - 2017). SHOULD NON COMPLIANT BE FOUND, ACR ARE TO BE INFORMED IN WRITING AND A VARIATION TO THIS DESIGN MAY BE REQUIRED. | 15. | APPROX. 12.5m OF EXISTING DN150 SEWER FROM "A"-B TO BE DISUSED & REMOVED FROM SITE |
| 10. | CONSTRUCTOR TO VERIFY INVERT LEVEL OF SEWER AT CH 0.00 (LINE 1) & 0.00 (LINE 3) PRIOR TO CONSTRUCTION.
ACR CONSULTANTS TO BE NOTIFIED IN WRITING OF ANY DISCREPANCY OF LEVEL FROM THAT WHICH IS SHOWN ON THIS DESIGN PLAN. | 16. | PROPERTY CONNECTION POINTS (PCP's) WITH A  SYMBOL, REFER TO PCP's DEEPER THAN 1.5m |
| 11. | CONNECTIONS TO LIVE SEWERS TO BE CARRIED OUT BY CONSTRUCTOR WHEN APPROPRIATE APPROVAL IS OBTAINED. | 17. | AREA COVERED BY TREE PRESERVATION ORDER/TREE PROTECTION ZONE. |
| | | 18. | PRIOR TO ANY EXCAVATION ADJACENT TO EXISTING TREES, CONSTRUCTOR IS TO LIAISE WITH COUNCIL AND OBTAIN ANY NECESSARY APPROVALS AS REQUIRED. |
| | | 19. | CONSTRUCTOR TO VERIFY JUNCTION LOCATION AND INVERT PRIOR TO ANY CONSTRUCTION ON SITE. |

2	ISSUED FOR DA APPROVAL	MLR	24.04.25
1	ISSUED FOR APPROVAL	MLR	14.04.25
No.	AMENDMENT DESCRIPTION	BY	DATE

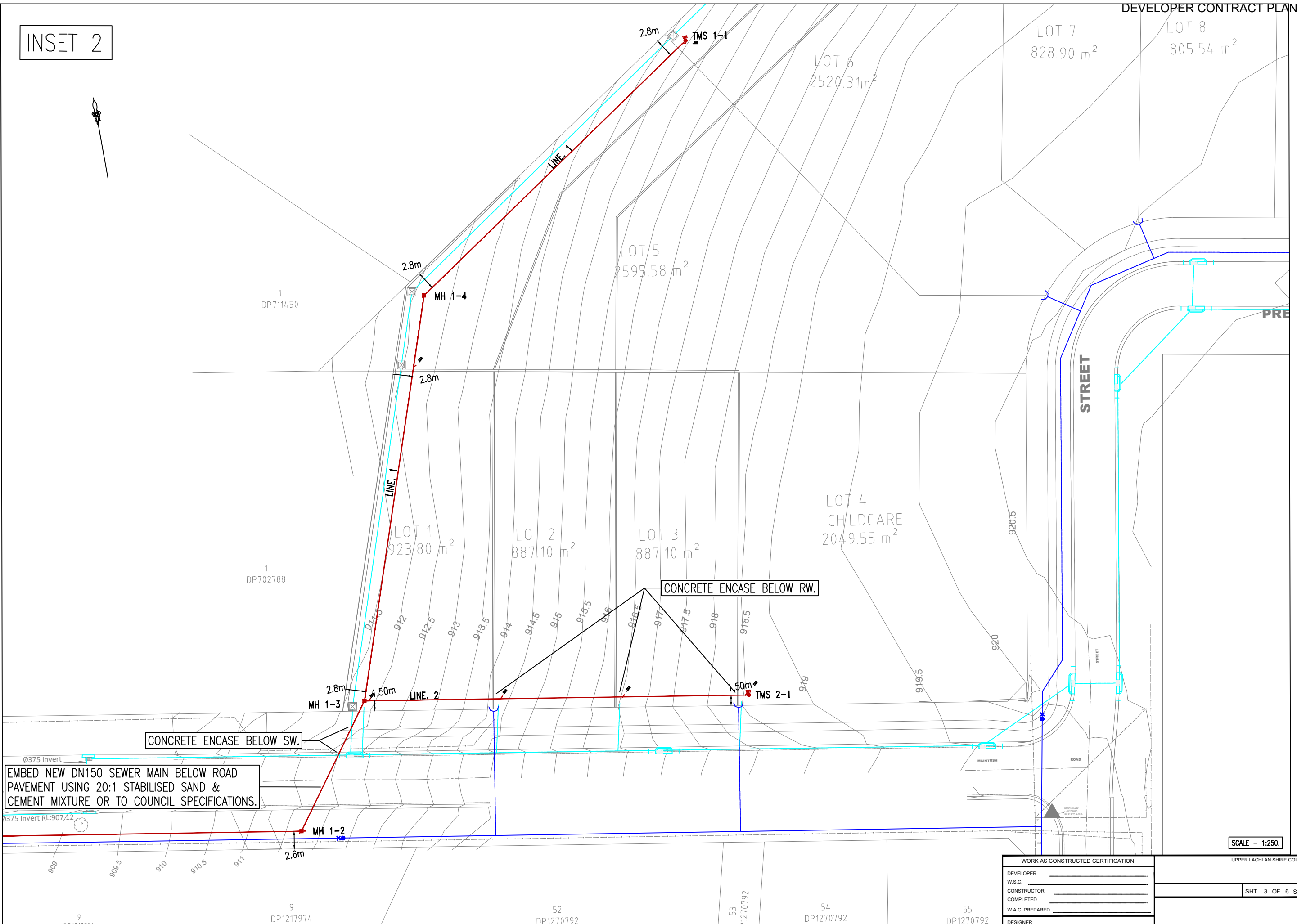
[illegible]



SCALE - 1:250

<p>WORK AS CONSTRUCTED CERTIFICATION</p>		<p>UPPER LACHLAN SHIRE COUNCIL</p>	
<p>DEVELOPER _____</p>		<p>SHT 2 OF 6 SHTS.</p>	
<p>W.S.C. _____</p>			
<p>CONSTRUCTOR _____</p>			
<p>COMPLETED _____</p>			
<p>W.A.C. PREPARED _____</p>			
<p>DESIGNER _____</p>			
<p>I CERTIFY THAT THE WORKS HAVE BEEN CONSTRUCTED IN ACCORDANCE WITH THE WORK AS CONSTRUCTED DRAWINGS</p>		<p>FOR DETAILS OF SERVICES SEE SHEET 1</p>	

INSET 2



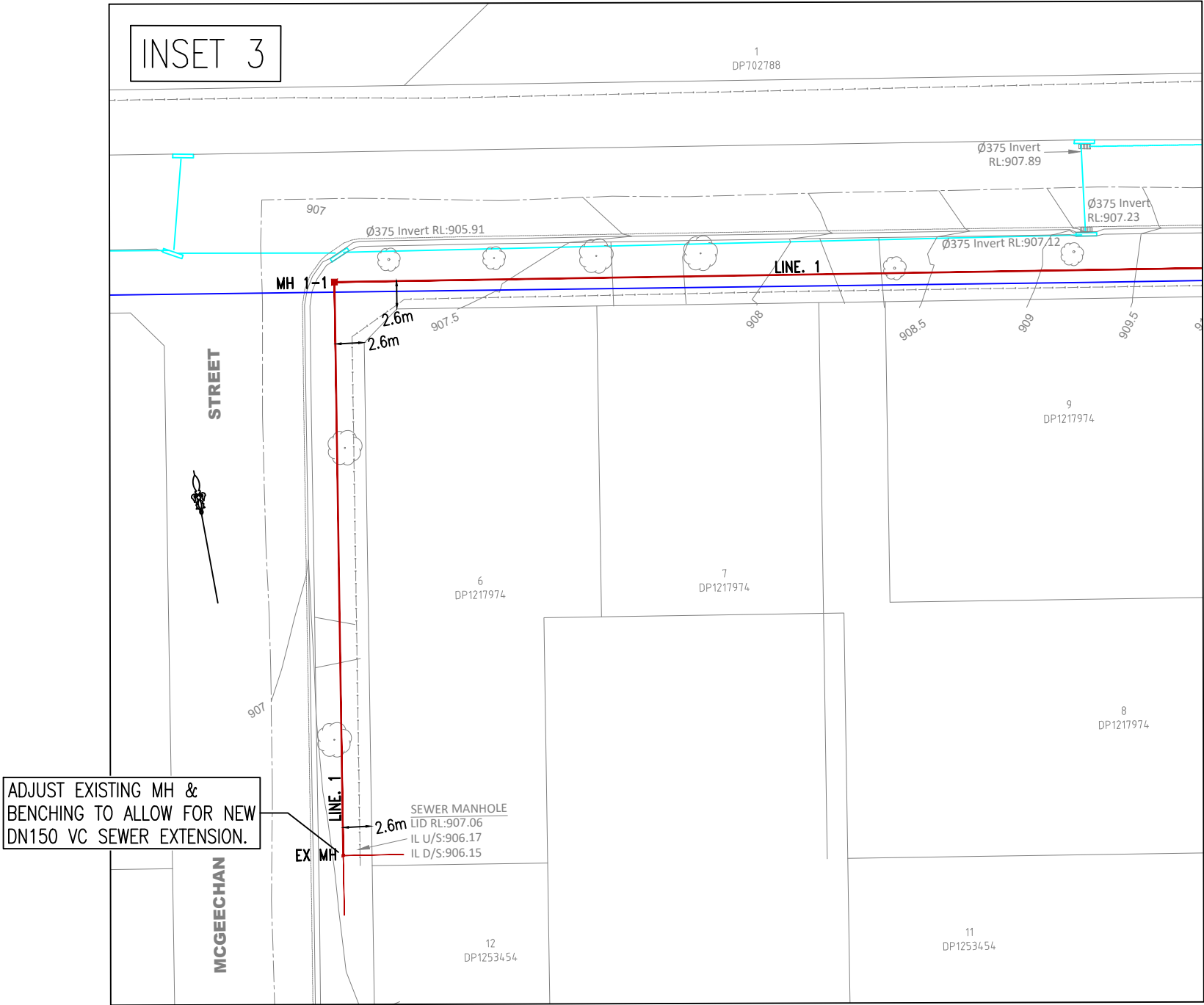
SCALE - 1:250.

WORK AS CONSTRUCTED CERTIFICATION	
DEVELOPER	_____
W.S.C.	_____
CONSTRUCTOR	_____
COMPLETED	_____
W.A.C. PREPARED	_____
DESIGNER	_____
I CERTIFY THAT THE WORKS HAVE BEEN CONSTRUCTED IN ACCORDANCE WITH THE WORK AS CONSTRUCTED DRAWINGS	

UPPER LACHLAN SHIRE COUNCIL

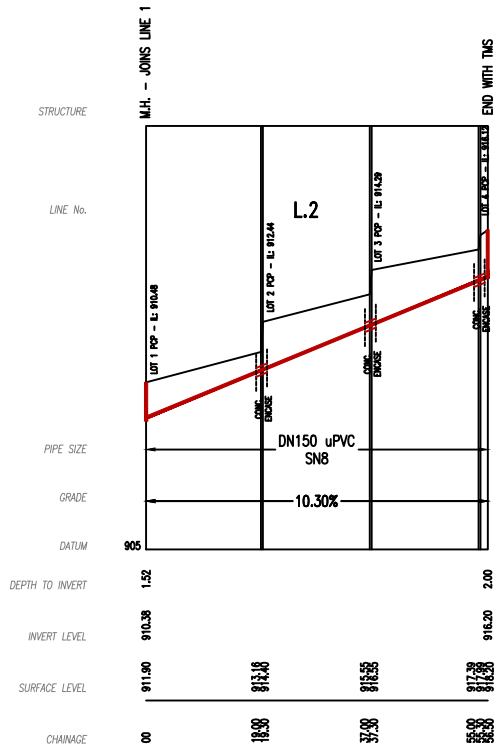
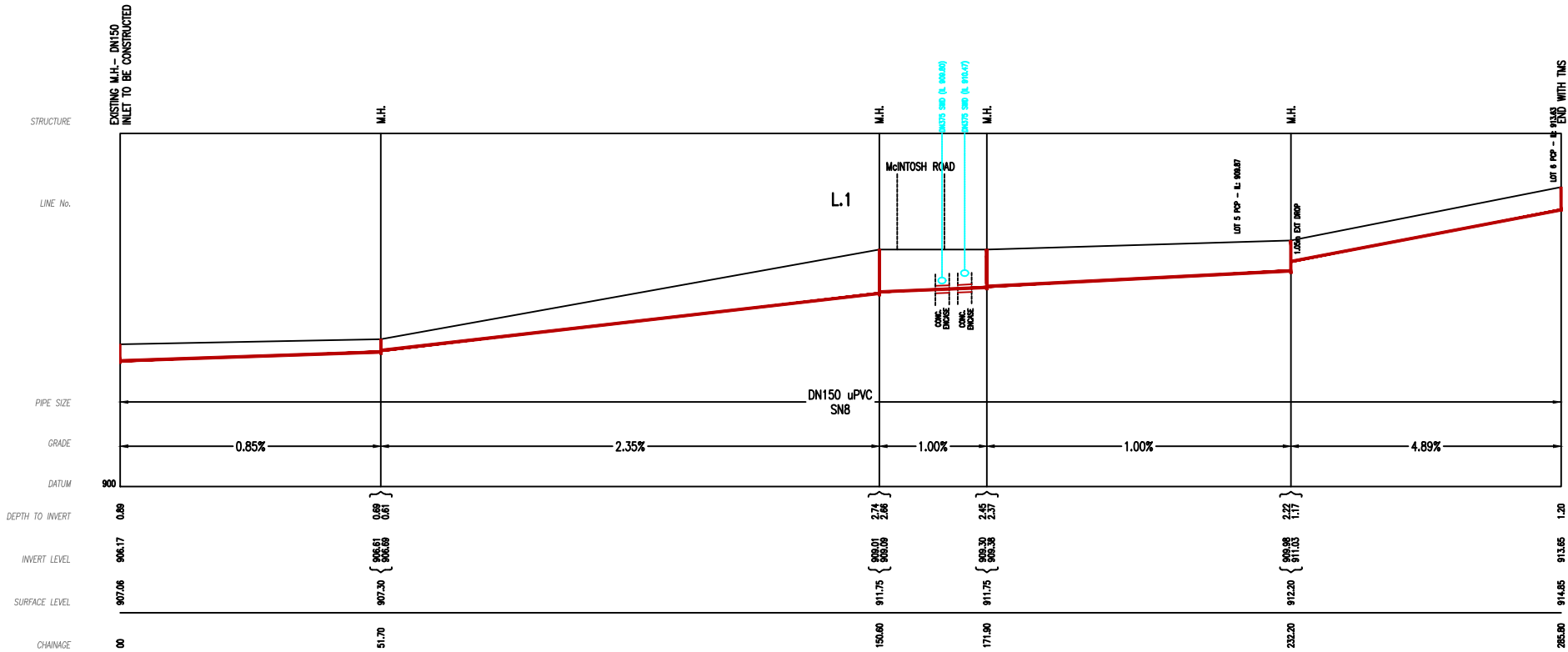
SHT 3 OF 6 SHTS.

FOR DETAILS OF SERVICES SEE SHEET 1

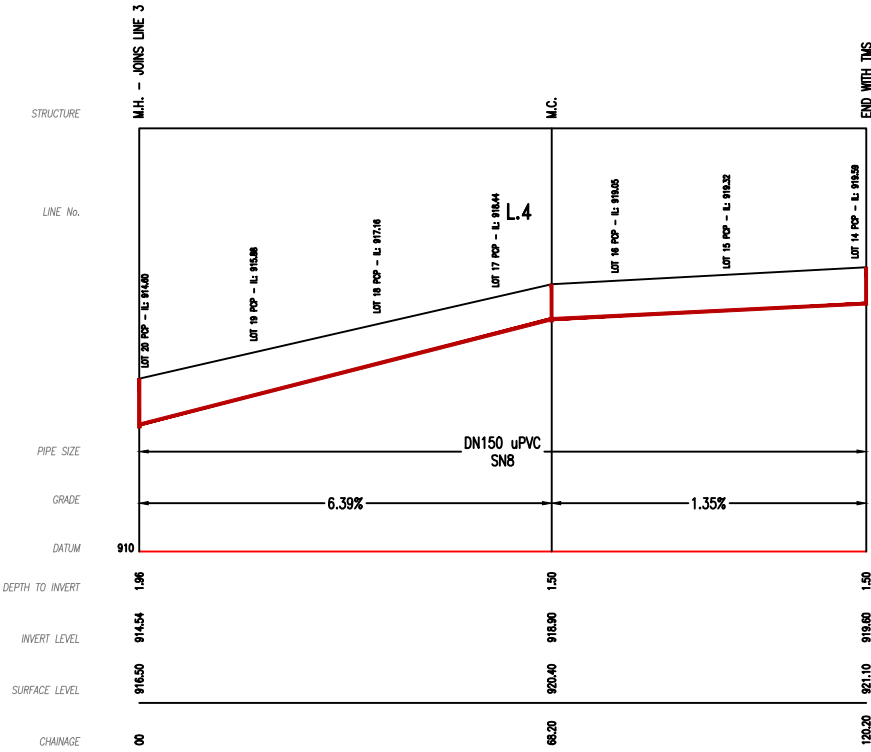
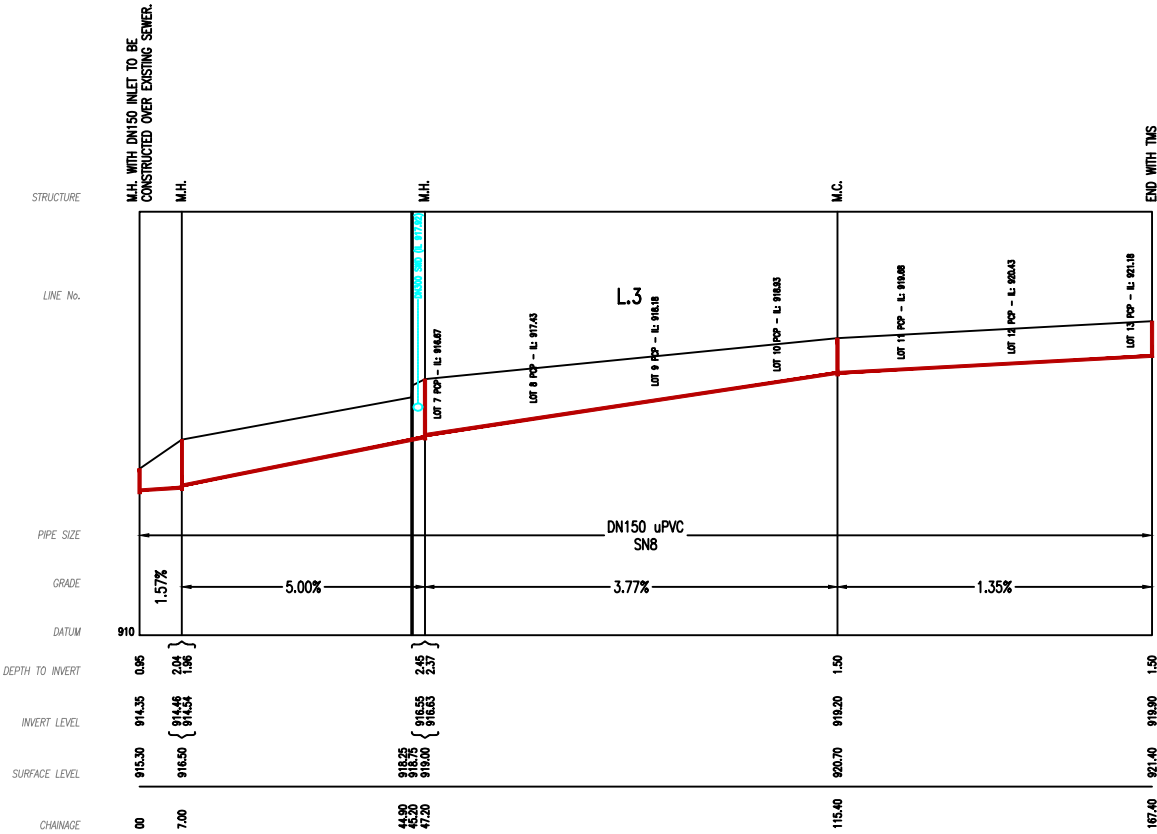


SCALE - 1:250.

WORK AS CONSTRUCTED CERTIFICATION		UPPER LACHLAN SHIRE COUNCIL	
DEVELOPER _____	_____	SHT 4 OF 6 SHTS.	
W.S.C. _____	_____		
CONSTRUCTOR _____	_____		
COMPLETED _____	_____		
W.A.C. PREPARED _____	_____		
DESIGNER _____	_____		
I CERTIFY THAT THE WORKS HAVE BEEN CONSTRUCTED IN ACCORDANCE WITH THE WORK AS CONSTRUCTED DRAWINGS		FOR DETAILS OF SERVICES SEE SHEET 1	



WORK AS CONSTRUCTED CERTIFICATION		UPPER LACHLAN SHIRE COUNCIL	
DEVELOPER _____		SHT 5 OF 6 SHTS.	
W.S.C. _____			
CONSTRUCTOR _____			
COMPLETED _____			
W.A.C. PREPARED _____			
DESIGNER _____			
I CERTIFY THAT THE WORKS HAVE BEEN CONSTRUCTED IN ACCORDANCE WITH THE WORK AS CONSTRUCTED DRAWINGS		FOR DETAILS OF SERVICES SEE SHEET 1	



SEWER SETOUT TABLE

POINT	LINE NO.	EASTING	NORTHING	FITTING TYPE
1-1	1	727417.470	6185272.026	MH
1-2	1	727515.031	6185255.840	MH
1-3	1	727527.569	6185273.034	MH
1-4	1	727546.887	6185330.094	MH
TMS 1-1	1	727591.386	6185360.036	TMS
TMS 2-1	2	727583.302	6185263.727	TMS
3-1	3	727650.600	6185409.781	MH
3-2	3	727649.256	6185402.832	MH
3-3	3	727641.639	6185363.381	MH
MC 3-1	3	727708.687	6185350.929	MC
TMS 3-1	3	727759.731	6185341.455	TMS
MC 4-1	4	727716.299	6185390.415	MC
TMS 4-1	4	727767.239	6185380.977	TMS

All coordinates are to centre of the fitting.

(*1) Provide long radius bend to achieve 90° or less horizontal deflection.

(*2) Provide high level connection to MC Riser.

All coordinates are to centre of the fitting except for MCs with a horizontal deflection component, where coordinate is the intersection point of the upstream and downstream lines. Contractor to refer to manufacturers table to determine cut lengths for long radius bends to suit compound angles.

FITTING TYPES

- MH(1) Pre-cast maintenance hole <1.2m
MH(2) Pre-cast maintenance hole >1.2m
MC(1) Maintenance chamber (straight) & long radius bend
MC(2) Maintenance chamber bend 90° bend
MC(3) Maintenance chamber bend 45° bend
TMS(1) Terminal maintenance shaft
DE Dead end

NOTES:

- WORKS MUST BE CONSTRUCTED IN ACCORDANCE WITH THE DESIGN DRAWINGS, CONSTRUCTION NOTES, AUS-SPEC 2022, INFRASTRUCTURE SPECIFICATIONS 0076 SEWERAGE SYSTEMS – RETICULATION SEWER (DESIGN), WSA 02-2014–3.1 GRAVITY SEWERAGE CODE OF AUSTRALIA (REGIONAL NSW) VERSION 01 AND WSA 02 STANDARDS DRAWINGS
- THE CONSTRUCTOR IS TO VERIFY THE POSITIONS AND LEVELS OF ALL EXISTING AND PROPOSED BOUNDARIES, SERVICES, PIPES, CABLES AND CONDUITS
- CLEARANCES SHOWN TO OTHER PIPES HAVE BEEN CALCULATED FROM THE COLLAR.
- "KERB LEVEL" SHOWN ON THE SECTION IS ADJACENT TO THE ROUTE OF THE PROPOSED SEWER.
- ALL PRODUCTS AND MATERIALS TO BE SELECTED FROM THE WSA APPROVED PRODUCTS AND MATERIALS REGISTER
- ALL PROPERTY CONNECTIONS TO BE LOCATED 1M FROM THE DOWNSTREAM BOUNDARY UNLESS OTHERWISE INDICATED. ALL CONNECTIONS TO BE 'BURIED INTERFACE METHOD' IN ACCORDANCE WITH SEW-1105 AND SEW-1107-V WITH:
 - VERTICAL RISER WHERE SEWER DEPTH >1.5M
 - MARKER TAPE (NON-DETECTABLE) LAID RAISED TO THE SURFACE AT EACH JUNCTION
- LAY PIPE IN ACCORDANCE WITH SUPPORT TYPE AS SHOWN ON LONG SECTION AND SEW-1251-H STANDARD TRENCH DETAILS.
- CONSTRUCT ALL MAINTENANCE HOLES IN ACCORDANCE WITH:
 - LONG SECTION LEVELS
 - SEW-1300-V TYPE P1 OR TYPE P2 AS SHOWN IN LONG SECTIONS.
 - ALL COMPONENT JOINTS TO BE SEALED AS PER SEW1300-V NOTE 11.
 - SEW-1302-V PIPE CONNECTIONS
 - SEW-1303-V CHANNEL LEVELS
 - SEW-1304-V / SEW-1305-V CHANNEL ARRANGEMENTS
 - SEW-1306-V COVER ARRANGEMENTS
- CONSTRUCT MAINTENANCE CHAMBERS (MC) AND TERMINAL MAINTENANCE SHAFTS IN ACCORDANCE WITH
 - SEW-1314-V
 - SEW-1315-V
 - SEW-1317-V
 - SEW-1318-V
 - SEW-1350-H
- CONTRACTOR IS TO VERIFY THE LOCATION OF ALL SERVICES WITH EACH RELEVANT AUTHORITY. ANY DAMAGE TO SERVICES SHALL BE REPAIRED BY THE CONTRACTOR OR THE RELEVANT AUTHORITY AT THE CONTRACTOR'S EXPENSE. SERVICES SHOWN ON THESE PLANS ARE ONLY THOSE EVIDENT AT THE TIME OF SURVEY.
- CONSTRUCTOR SHALL WRAP AND SEAL ALL EXTERNAL JOINTING ON MAINTENANCE STRUCTURES USING "GATOR WRAP" OR SIMILAR.
- ALL PROPOSED MAINTENANCE STRUCTURE SHALL INCORPORATE CLASS 'D' BOLT DOWN, AIR-TIGHT LID & SURROUND.
- ALL MAINTENANCE STRUCTURES INCORPORATING DN375 SEWER PIPE WORK SHALL BE INTERNALLY EXPO LINED IN ACCORDANCE WITH WSA 02-2014–3.1 9(REGIONAL NSW EDITION), PREFERRED PRODUCTS & MATERIALS AND APPENDIX 'D' – PROTECTION AGAINST DEGRADATION.

WORK AS CONSTRUCTED CERTIFICATION		UPPER LACHLAN SHIRE COUNCIL	
DEVELOPER _____	W.S.C. _____	SHT 6 OF 6 SHTS.	
CONSTRUCTOR _____	COMPLETED _____		
W.A.C. PREPARED _____		FOR DETAILS OF SERVICES SEE SHEET 1	
DESIGNER _____			
I CERTIFY THAT THE WORKS HAVE BEEN CONSTRUCTED IN ACCORDANCE WITH THE WORK AS CONSTRUCTED DRAWINGS			